



Mission Educate Ltd

Annual Report

2022



missioneducate

Knowing changes everything.

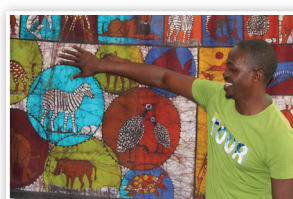


Contents

Board Chair & Executive Director Report.....	4
Mission Educate At A Glance	5
Our Values	6
Our Vision.....	6
Our Mission	6
Milestones.....	7
Our Governance.....	8
Mozambique Overview.....	10
Mozambican Leadership.....	12
King of Kings School.....	13
Mission Educate Technical Institute	14
Literacy For Life Project.....	15
Community Support and Employment.....	16
Enterprise Development	16
Courageous Women.....	17
Income and Expenditure Report	18
Auditor Declaration	20
Looking Ahead.....	22
Our Registrations	23
Thank You to All Our Supporters.....	23
Connect With Us.....	24
Stand With Us	25
Audit Report - Appendix A	26



Visit us online at missioneducate.org



Images of batik artworks used in this report are of the original creations of Mozambican artist Domingos De Carvalho.



Board Chair & Executive Director Report

We are pleased to present this 2022 Annual Report to you. This is the first time that Rodney Newth has the pleasure, having been elected as the new Board Chair, to formally provide an annual report. We wish to thank Simon Brown for his years of service as Board Chair and are pleased that his contribution to the Mission Educate Board will continue in his role as Deputy Board Chair.

Following three years of challenges created by Covid 19 and Cyclones Idai & Eloise, 2022 was a year of re-organisation to provide a better organisational foundation for future development.

An exciting positive development was the appointment of Alford Ncube as our first National Director. Alford's role is to oversee and coordinate the operations of all our projects in Mozambique. He reports both to the Executive Director and Financial Controller and ultimately to the Mission Educate Board. Alford has proved his commitment, integrity and organisational capacity during his years as Principal of the King of Kings School. He assumed leadership of a small struggling school and in 10 years has led its development into a sustainable and educationally viable educational institution with an outstanding reputation in the community. An Acting Principal was appointed at the beginning of the year, to fill the leadership gap created by Alford's appointment and a permanent appointment will be made for 2023.

The appointment of Filipe Melo, previously the Administration Director of Mission Educate Mozambique, as the Director of the Technical Institute was another important appointment made during 2022. Filipe's administrative ability is supported by a team of educators who are working together to bring the Institute to a basic level of viability and sustainability.

There have been some other personnel changes during 2022 in our governance and Australian operations. We farewelled Tamar Bostock after four years of commitment to the Board and appreciated

the experience and wisdom she contributed. Jill Lovell, our Projects Director in Mozambique (See tribute below) finished with us during 2022 to pursue other directions in her life, as did Lee Murphy our Operations Manager. We greatly appreciated the contribution that each of them has made to the development of Mission Educate.



Terry King
Executive Director

Rodney Newth
Board Chair

The Board is grateful to so many, whose commitment has enabled us to maintain our operations during the last 20 years.

Whilst these changes have motivated the Board to investigate and develop better operational practices, they highlight the very significant impact that the faithfulness and dedication of people has on the development of Mission Educate. The Board is grateful to so many, whose commitment has enabled us to maintain our operations during the last 20 years.

We would like to also express our gratitude to Natalie Baker, Mission Educate's Financial Controller whose experience, commitment and hard work has guided us through the financial challenges confronting us. We are grateful for the support that her husband David has provided to enable her to fulfill her role.

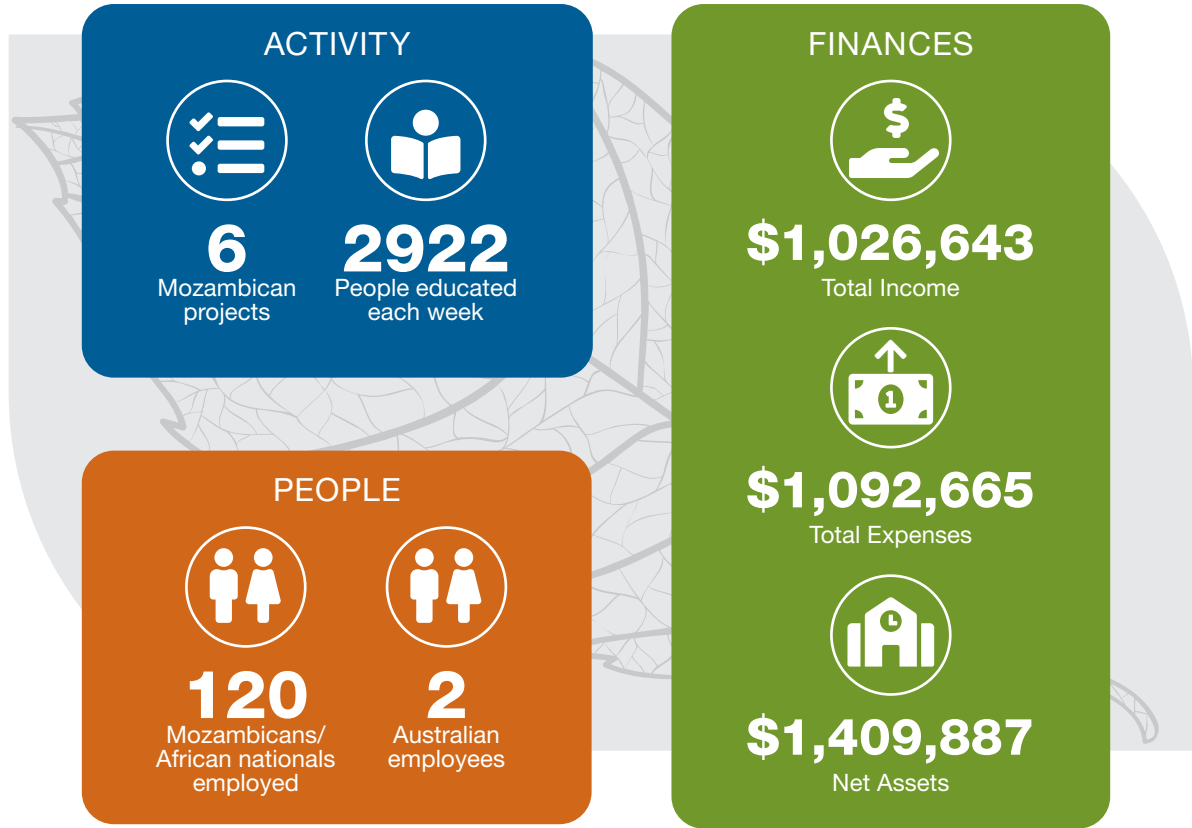
As this report reveals, our projects continue to operate despite the challenges. As a Board we have responded to the issues confronting us and trusting in the guidance and provision of our God, look forward to the future.






A Tribute to Jill Lovell

We want to honour the contribution that Jill Lovell has made to the development of Mission Educate in Mozambique for almost 9 years. She has worked tirelessly in her role as Projects Director, responsible for the development of the Mission Educate Technical Institute, the Literacy for Life Project and the establishment of the Block Making and Sewing enterprises. We thank God for her contribution and wish her well in her future endeavors.



Mission Educate At A Glance



	PROGRAMS	PROJECTS
	General Education	<ul style="list-style-type: none"> King of Kings School
	Technical Education	<ul style="list-style-type: none"> Mission Educate Technical Institute
	Community Education	<ul style="list-style-type: none"> Literacy for Life Project Vocational Skills Courses
	Employment	<ul style="list-style-type: none"> Sewing Enterprise Blockmaking Employment
	Partnerships	<ul style="list-style-type: none"> Developing Supportive Partnerships



Our Vision

People of integrity and compassion, educated and technically competent, aware of an eternal destiny and transforming their communities and nations.



Our Mission

To support community transformation in developing nations by creating inclusive, sustainable, relevant initiatives that develop people with integrity who are educationally competent, spiritually alive and socially responsible.

Our Values



Demonstrated through Integrity, Knowledge and Wisdom.



Demonstrated through Servanthood, Compassion and Partnerships.



Demonstrated through Trust, Grace and our Christian Beliefs.

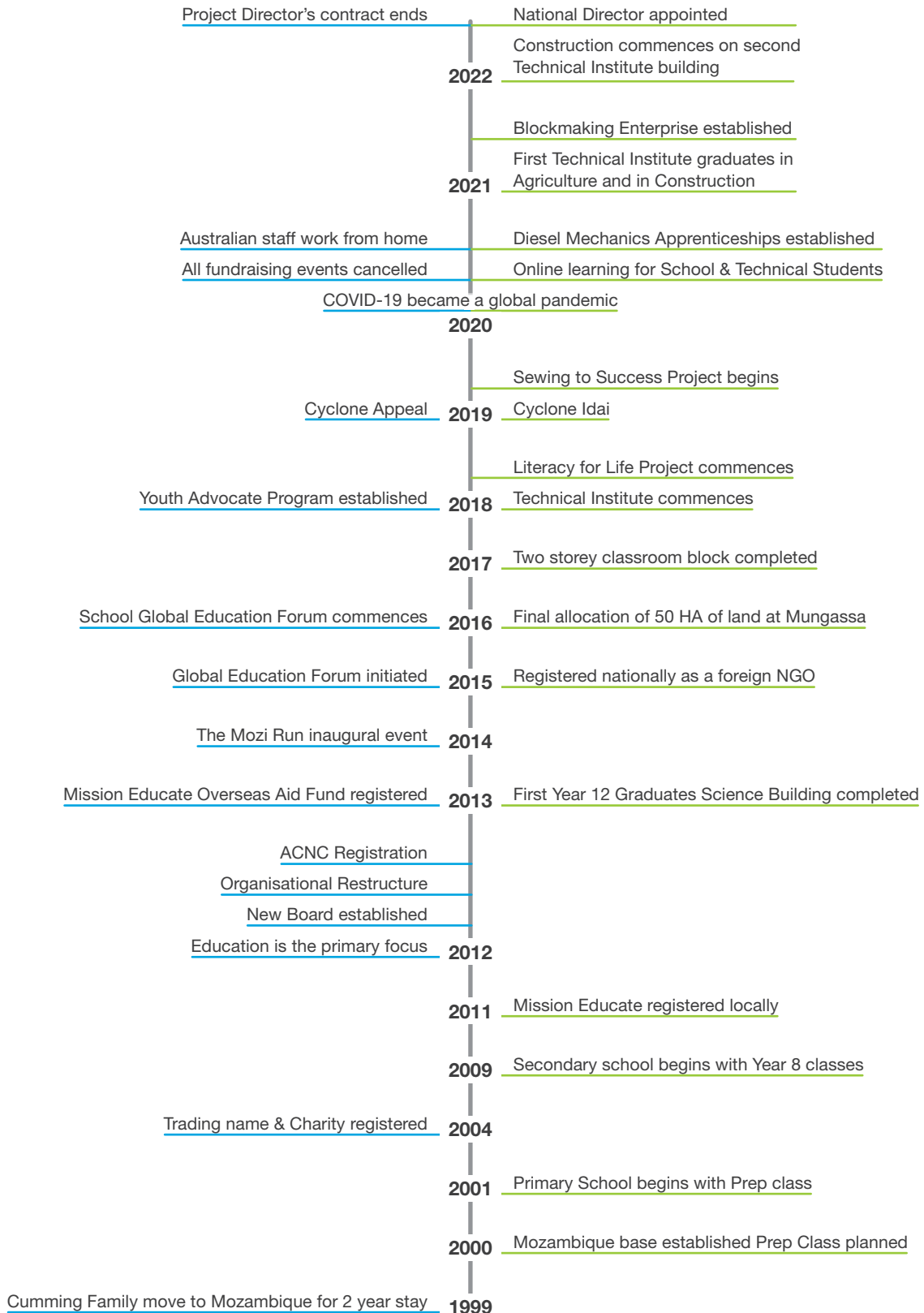


Demonstrated through Accountability, Empowerment and Purpose.



Demonstrated through Innovation, Leadership and Reflective Practice.

Milestones



Our Governance



Simon Brown
Pastor

Appointed: December 2012

Responsibilities: Board Chair

Simon has over 25 years leadership experience in Church and Youth Groups. He owns and operates his own successful electrical business on the Gold Coast. Simon brings his business acumen and a commitment to family values to the Board.



Terry King
Ed.D., M.Ed., B.Ed., Dip T., MACE

Appointed: December 2012

Responsibilities:
Executive Director

Dr Terry King brings a depth of educational experience and expertise to Mission Educate. He is a widely respected educator and has held leadership positions in schools and educational associations. Dr King became Executive Director in 2011.



John Spence
M.A., Grad Cert Ed

Appointed: December 2012

Responsibilities: Board Member

John Spence has spent his career in secondary and tertiary education working in both government and private sectors. He has held leadership positions in both schools and curriculum development committees and has served on a number of Boards.



Clarah Chiwaya
B. Comm; Grad Dip
Chartered Accounting

Appointed: September 2020

Responsibilities: Treasurer

Clarah has developed a wide range of financial skills and experience. She has worked in Finance in a number of companies and is a member of Chartered Accountants CAANZ. A Zimbabwean by birth, Clarah brings a unique African perspective to the Board.



Rodney Newth
Grad. Cert in Business, B.Ed., Cert
in Christian Ministries and
Church Management.

Appointed: June 2019

Responsibilities: Deputy Chair

Rod is a popular and well-respected educator at Emmanuel College. Prior to this he ran a successful interstate transport company, driving and devising supply chain solutions for large companies. Rod's business and educational perspective is a valued contribution to the Board.



Christopher Emert
B.Bus., Cert IV OHS.

Appointed: August 2019

Responsibilities: Board Member

Chris has spent two decades establishing businesses in the for profit sector. He was impacted by a visit to Rwanda in 2014 which affirmed the value of education. Chris brings an entrepreneurial yet compassionate perspective to the Board.



Tamar Bostock

Resigned: February 2022

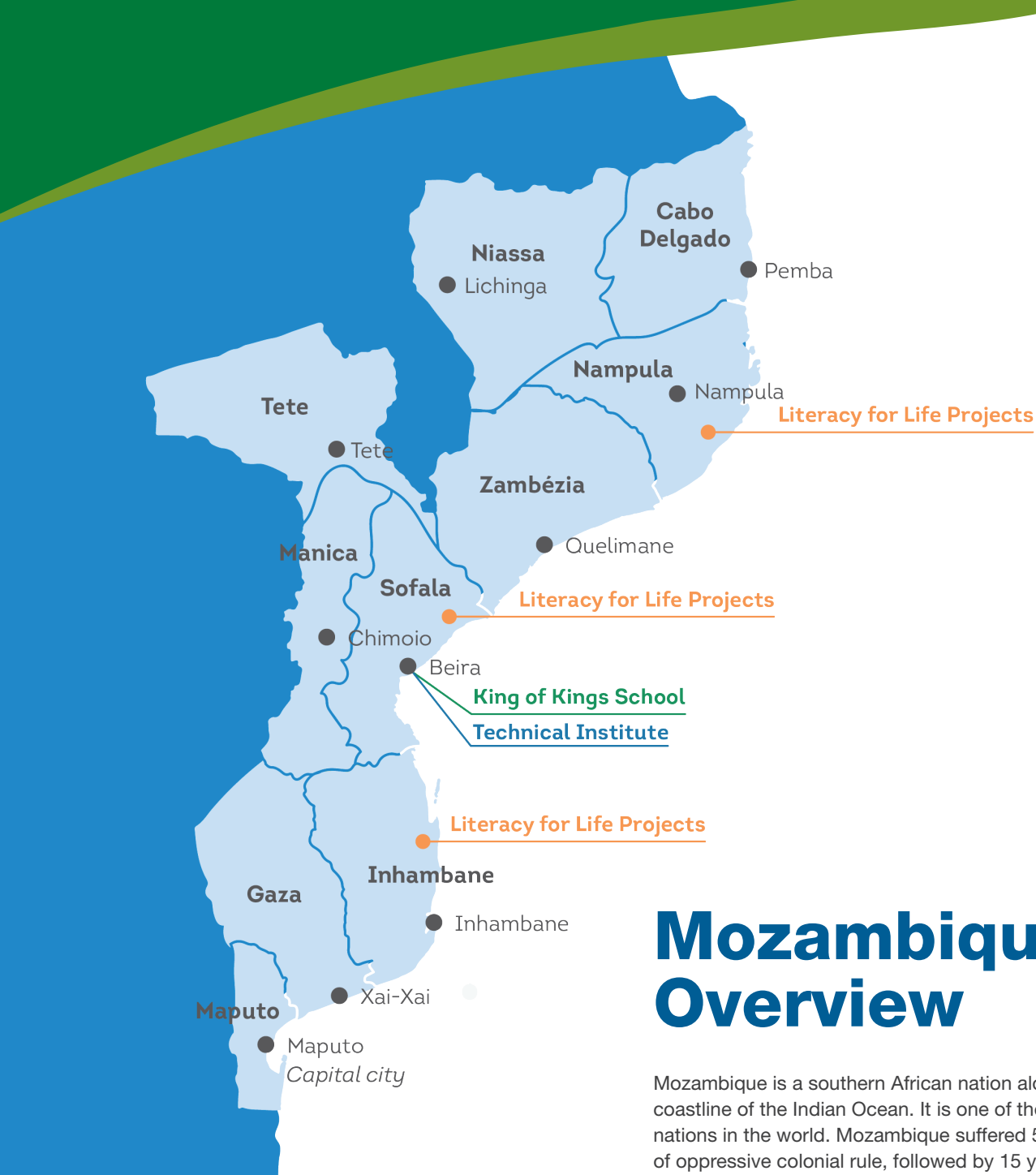
B.A. (Modern Asian Studies), Grad Dip Ed

Appointed: October 2019

Responsibilities: Board Member

Tamar is a learning and performance professional with over 25 years experience in developing, leading and improving strategies and processes for complex organisations in the education, enterprise, industry, and not for-profit sectors.





Mozambique Overview

Mozambique is a southern African nation along the coastline of the Indian Ocean. It is one of the poorest nations in the world. Mozambique suffered 500 years of oppressive colonial rule, followed by 15 years of a destructive civil war. The first democratic elections were held in 1994.

- Capital: Maputo
- President: Filipe Nyusi
- Population: 32.5 million
- Currency: Mozambican metical
- Official language: Portuguese
- Flag:



Source: CIA World Fact Book - Mozambique May 2023

Population:
32,500,000+

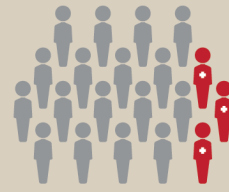


Life expectancy
at birth (years)

61.4

Median
age

17.6
years



2.2 million people
living with HIV/AIDS

Population
under the age
of 25 years

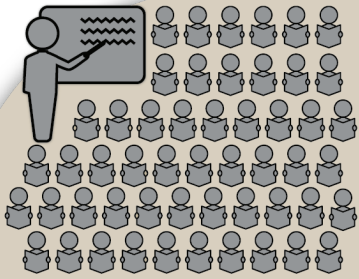
65%



63.7%
of
the population
are living below
the income
poverty line

61%

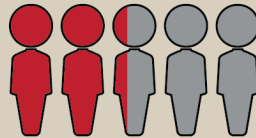
of the population
are illiterate



52:1 Pupil-teacher
ratio



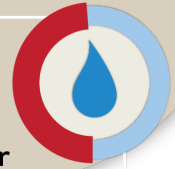
43%
of
children under 5
are malnourished



71%
of
the population rely on
subsistence farming



only 49%
of
the population have
access to clean water



58% Primary school
completion rate

24% Secondary school
completion rate

Source: World Bank - Data Mozambique - August 2020

Source for 80% unemployed youth 18+: www.un.org/youthenvoy/2016/01/youthstart-youth-economic-opportunity-ecosystem-analysis-country-report-mozambique/



66.8%
Primary school
dropout rate

only
34%
Secondary gross enrolment



80%
Unemployed youth 18+ yrs

7.6 years
Mean years
of schooling



* pre-COVID-19 statistic

7%
of secondary graduates
enrol in tertiary education



only
30%
of the population have skills
suitable for paid employment



Mozambican Leadership



Alford Ncube - National Director

Amongst the many challenges created by Covid19, was a leadership vacuum that developed when our Australian Projects Director was transferred back to Australia. Whilst a distance model of leadership was expressed for 12 months, it was apparent that there was a need for greater relational contact with our projects to advance our vision. It has always been Mission Educate's policy and strategy to devolve significant leadership responsibility in Mozambique, to qualified Mozambican or other African national leaders. As a result of a review of our Mozambican governance and changes in the circumstances of the Australian Projects Director, the Mission Educate Board decided to appoint a National Director for Mozambique. Alford Ncube, the Director of the King of Kings School was appointed as the National Director in May 2022.



Alford Ncube

Alford has been working with Mission Educate in Mozambique since 2012, initially as a teacher at the King of Kings School. He was appointed Director of the School in 2013. Under his leadership, the King of Kings School has grown from a few hundred students to a maximum enrolment of 2000 students.

Alford has a proven track record in leadership and cooperation with the Mission Educate Board. He has developed a commendable reputation in Mozambique as an excellent educator. The Board is confident that under this leadership, the Mission Educate vision for the development of education in Mozambique will be enhanced and realised.

In 2022, Alford completed a Master of Education degree by distance education, an internationally recognised Australian degree from Christian Heritage College in Brisbane Australia. Alford is married to Sylvia, his wife and they have three children.

National leadership team and administration

Alford is supported in his role as National Director by a National Leadership Team. The team comprises Filipe Melo, Director of Mission Educate Technical Institute and José Zacarias, Coordinator of the Literacy for Life Project. As other suitable Mozambican leaders emerge, these will be added to the Leadership Team.

A small administrative staff assists Alford in his role incorporating finances, administration and human resources. Alford and his team provide leadership to over 100 Mozambican staff. He is responsible for the day to day operations of Mission Educate projects, liaises with each Project leader and reports to the Mission Educate Board through the Executive Director and Financial Controller.



King of Kings School



Meque Joao Batana - Acting Principal

As the impact of COVID-19 subsided, the King of Kings School gradually resumed its normal activities during 2022. The appointment of Alford Ncube, the King of Kings School Principal as the National Director resulted in a temporary appointment of Meque João Batana as the Acting School Principal until the appointment of a permanent Principal in 2023.

As face to face attendance by students increased, so too did the opportunities for students to be involved in regional sport and academic competitions. A number of students who participated in the district Science Fair and Natural Science Olympics qualified for the regional level. The girl's soccer team were crowned Provincial Champions and qualified to represent the province in the regional championships to be held in 2023.

Student welfare continued to be a priority during 2022. The School Chaplain and pastoral staff provided support and encouragement to families experiencing hardship as a result of COVID 19. Developments were introduced to improve the pastoral care of students and involvement of their families. Students attended presentations on road safety from the National Traffic Police and improvements were made to the care of sick students during class time. A Parents' Consultation Day was established to enable parents to discuss their students' welfare and academic progress.

Despite the challenges that Covid imposed, students continued learning with good results in the national examinations.

Our school staff

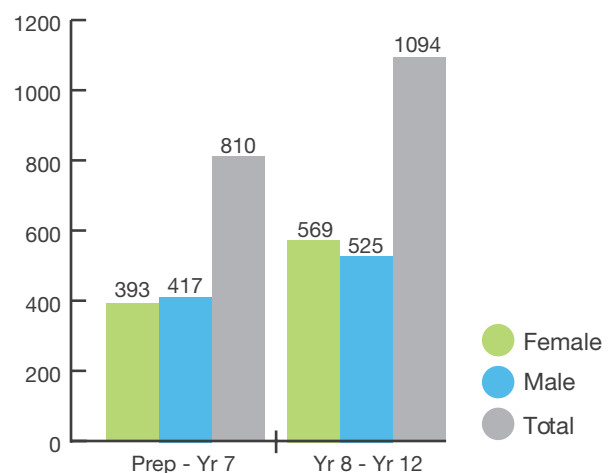
	Female	Male	Total
Executive	1	3	4
Primary Teachers	13	3	16
Secondary Teachers	7	22	29
Administration	4	1	5
Maintenance	3	6	9
Total	28	35	63



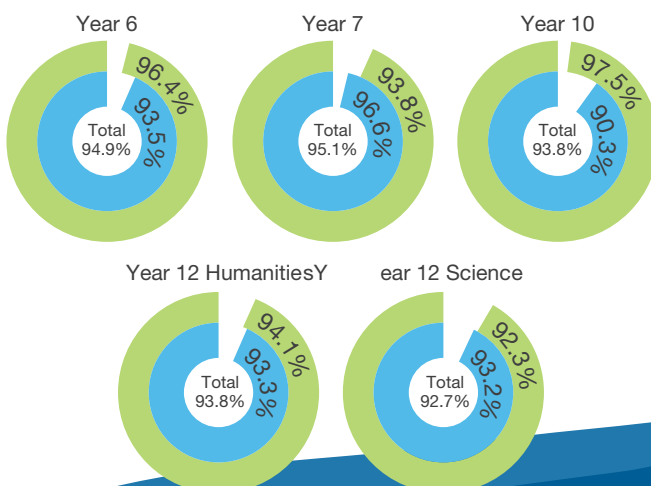
Teaching qualifications

Qualification	Female	Male	Total
Diploma	1	1	2
Bachelor's degree	17	29	46
Masters degree	0	1	1

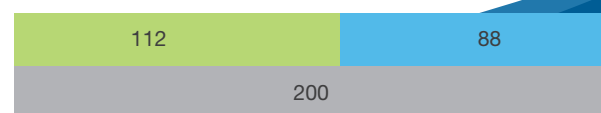
Enrolments



National exams pass rates (%)



Year 12 graduates



Mission Educate Technical Institute



Filipe Melo - Director

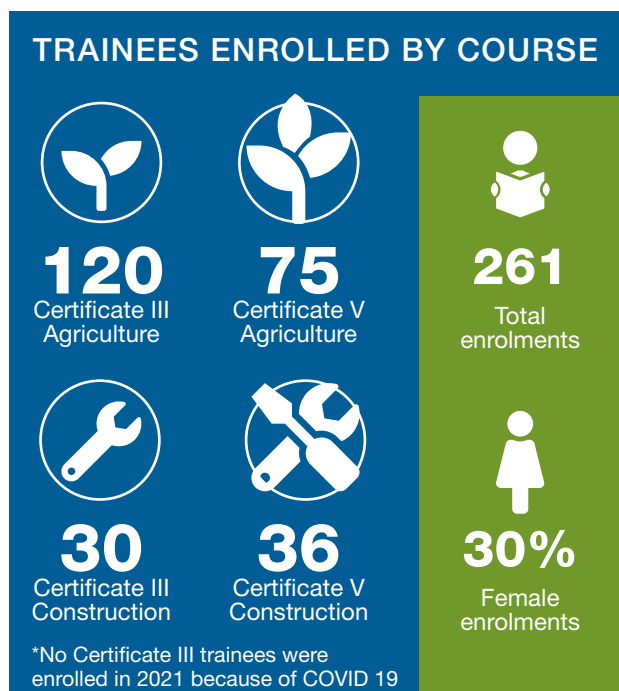
Following a review of our staffing and leadership, the Mission Educate Board appointed Filipe Melo as the Director of Mission Educate Technical Institute in March 2022. Filipe has been working with Mission Educate since December 2018 and was responsible for the administration of the Technical Institute.

The Mission Educate Technical Institute faced a number of significant challenges during 2022 as Mozambique navigated its way forward from the impact of COVID 19 and Cyclones Idai and Gombe. Because of difficulties in employing a qualified diesel mechanics instructor, the Diesel Mechanics course was terminated. Assistance was given to trainees participating in that course, to enrol in similar courses at other institutions.

The courses for Certificate III and V in Agriculture and Construction continued. No Certificate IV courses were conducted because there had been no enrolments in the Certificate III courses in 2021, because of COVID 19. There was a reduction in the number of female enrolments because of the continuing financial pressure created by Covid.

Construction on the Technical Institute buildings was suspended because of a lack of finance and courses were moved off site to the Emiliano facilities previously rented from the Somascan Fathers. The graduation of the trainees in the Certificate V Courses in Agriculture and Construction was delayed because of the extended course time frame due to COVID 19.

Despite the challenges, trainees continued to apply themselves to their courses with good results. Many positive and complimentary assessments of trainees participating in work experience with local businesses, were received from employers.



Emilio's story

My name is Emilio. I am a trainee in the Certificate V Construction course at the Mission Educate Technical Institute. All my life I dreamed of becoming a Civil Engineer but it seemed that my dream would never be achieved. I was unable to obtain enrolment in a university course because my family were unable to pay the fees. I am one of 5 children and my parents are poor farmers. They work each day in the fields from sunrise to sunset just to grow enough food for us to eat. Sometimes they are able to sell any surplus vegetables they have grown. My life changed in 2020 when I had the opportunity to enrol in the diploma level Construction course at the Mission Educate Technical Institute. It seemed that a pathway to my dream was revealed. I have been studying hard and learning many things that will help me achieve my dream. After I graduate with my diploma I will be seeking employment to achieve that dream.



Literacy For Life Project

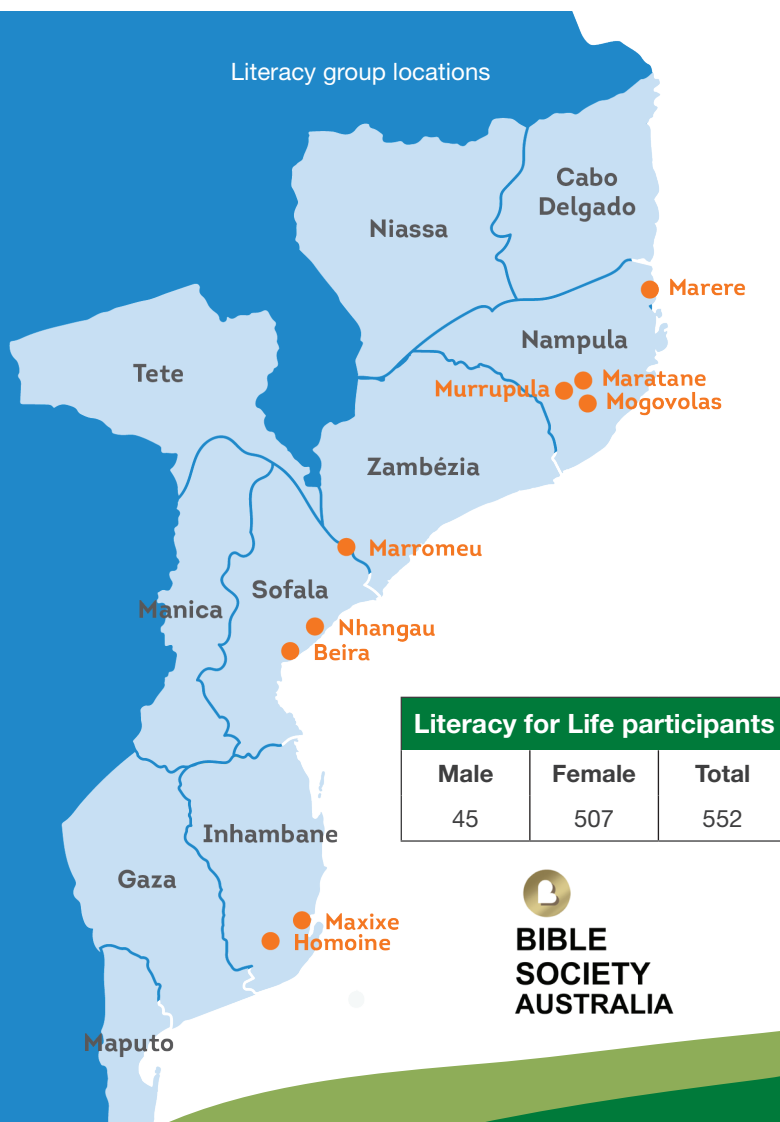
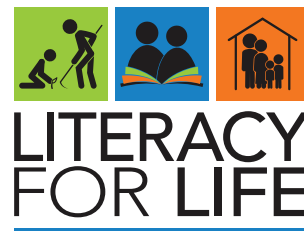


José Zacharias - Literacy for Life Project Coordinator

We are very grateful to Bible Society Australia for their continued support of the Literacy for Life Project. During 2022, four new literacy groups were established in Nampula Province and 15 groups continued in Sofala and Inhambane Provinces. Mission Educate provided 552 previously illiterate adults with the skills to read and write and assisted them on their pathway to fulfill their personal dreams and God's plan for their lives.

The establishment of Literacy groups in Nampula Province is an exciting development in the expansion of the Literacy for Life Project. The Literacy team met with Provincial government officials who were greatly impressed with the quality of literacy materials and the organisation of the Project. Members of the Literacy for Life Team connected with the Director of General Education and his officials in Inhambane Province to discuss the development of the Literacy Project in that Province. Those officials were impressed with the Project, especially the inclusion of life skills' training for participants. In a separate visit to Marromeu, the Literacy team met with the State Literacy Coordinator who expressed her support for the Literacy for Life Project.

Whilst it is encouraging to see the expansion of the Literacy for Life Project, the real impact is experienced in the lives of each individual.

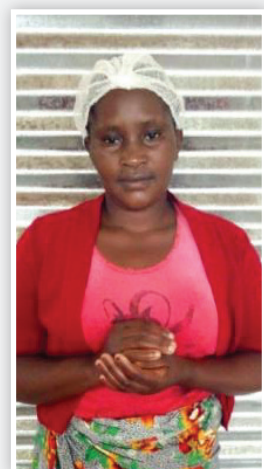


Literacy for Life participants		
Male	Female	Total
45	507	552



Sidonia's Story

I am Sidonia. I am a Literacy for Life Project participant at Homoine in Inhambane Province. When I joined the project I didn't know anything. Now I am able to read, spell the letters of the alphabet and can count numbers and calculate. Our class has been doing life skills' courses which are so important. As a result, many of us are able to start a small business and help lift our families out of poverty. We are so grateful for the Literacy for Life Project. It has changed our lives.





Community Support and Employment

Mission Educate continues in its commitment to see transformation occurring in individuals and communities.

A grant was received in 2022 from the National Authority for Professional Education (ANEP) to conduct a number of short 6 month courses, in association with the Mission Educate Technical Institute. The courses in agriculture, bricklaying and construction focussed on providing basic skills for 240 people with an overall 50% gender ratio. Participants who completed the course requirements received a Certificate from ANEP which is a recognised qualification in the community.

Opportunities for short course training helps fulfil our strategic objective to “empower people with knowledge and skills’ and to provide vocational courses for disadvantaged adults. The skills learned assist participants to develop confidence for seeking employment or developing self employment.



Enterprise Development

In 2019 the Sewing to Success enterprise was commenced, followed by a Blockmaking enterprise in 2021. It was hoped that both of these initiatives would provide opportunities for vocational training and the establishment of self employment for disadvantaged adults.

Towards the end of 2021, a review was held to determine the sustainability of these enterprises. It was apparent that there was not a current need in the market for either enterprise. The perceived gap in the market prior to COVID 19 for smaller enterprises delivering a higher quality of product, was filled during Covid by many individuals establishing their own small business. The decision was made to downsize each enterprise to provide products required for Mission Educate’s operations. The Sewing enterprise supplies the King of Kings School and Mission Educate Technical Institute with uniforms. The Blockmaking enterprise has been incorporated into the Mission Educate Construction team and provides concrete blocks for our construction needs. Trainees from the Technical Institute are still able to acquire skills and experience using the blockmaking machine, on a volunteer basis.



Courageous Women

Courage is most often identified in extraordinary acts that people do in response to extraordinary situations. Yet each day so many who live in developing nations display extraordinary courage in facing ordinary circumstances.

The simple acts of providing food for a family, obtaining education, caring for the sick or providing shelter, are challenges that millions in the developing world face daily. Often it is the mothers, wives or daughters who deal with these challenges, courageously facing difficult daily circumstances, cultural expectations and prejudices that have been re-enforced for centuries.

Mission Educate is committed to providing equal opportunity to education for all individuals. It recognises the specific challenges that girls and women have in accessing education and is proactive in encouraging females to participate in our educational projects.



Marta's story

I was born into a poor family in Mafambisse. My early memories are filled with suffering as my father was unemployed and our only food and income was from a small vegetable plot. My little brothers and I worked very hard all day in the fields. When there was no rain, there was no food. I know what it is like to feel hunger all the time. My mother especially suffered greatly from seeing her children starving. Working in the fields was a must for us as children. There were no other options for survival. It was really a painful life.

When I grew to school-age, I had to leave my parents and move to an area where there was a school. I lived with my sister at the home of my father's brother. My uncle treated us girls very badly. As a result my parents rented a small room made of mud and sticks so we could continue to attend school. It was such a challenge for our parents to pay the rent. When they were unable to pay, we moved back home and spent hours walking to school each day. I found a job working in the house of a lady near the school to help pay for the costs of attending school. I worked for her during the day in exchange for food and clothes and attended night school. I was able to finish my Grade 12.

When I was a child, I dreamed of becoming a doctor. I realised that dream would never become a reality for poor girls like me. I heard about the Mission Educate Technical Institute in Beira and enrolled in the Civil Construction course. This course has given me a new vision for my future. In the first year, I managed to pay my fees but as time progressed, it became harder and harder. It was difficult for me to concentrate on my studies and work to support myself.

I shared my story with the Chaplain at the Technical Institute and was given a scholarship so I could finish my course.

I am so grateful to Mission Educate for giving me an opportunity to pursue my dream. No one in my family has ever completed Year 12. I am the first. My dream of completing a professional course and then finding well paying employment is coming to pass. If Mission Educate had not intervened, I would have dropped out and there is no one in this world who could have helped me.

I want to encourage other women who might be in the same situation as mine, to stand firm and courageous. I feel that I am growing stronger day by day despite the difficulties. My dream has now expanded. I want to go to University and become a Civil Engineer. With God, nothing is impossible.

Income and Expenditure Report

Mission Educate is committed to balancing program impact and financial sustainability when making decisions regarding our activities. We work collaboratively with our stakeholders to develop innovative funding streams that enhance service delivery outcomes. A key aspect of our financial sustainability model is the contribution of fees by our School and Technical Institute students. As our enrollment numbers continue to recover post Covid, fee revenues have increased overall to \$529,551, representing 56% of our income.

Income

We would like to thank all our individual supporters, schools, trusts, corporate partners, major donors and others for their generosity. We are humbled by the generous financial support we received from our supporters, particularly in light of the challenges created by Covid and the ongoing personal difficulties many people have experienced. Our donations and sponsorship remained stable in 2022. The most significant variation in our income was the conclusion of grant funding to improve facilities Technical Institute at the end of 2021. Our income for the year was \$ 944 488.

Expenditure

Because of the support we received, Mission Educate assisted more than 2900 people in Mozambique to engage in quality education each week. Challenges remained for the delivery of education post Covid. However, Mission Educate was able to provide existing students, trainees and participants with continuity of their education in 2022, and welcome new first year enrolments for our three year Technical courses. Our total expenditure in 2022 was \$ 1 032 797, of which \$875 471 was incurred in the delivery of activities in Mozambique.

Overall result

The year ended with an operational deficit of \$88,309 which was funded by reserves brought forward from 2021.

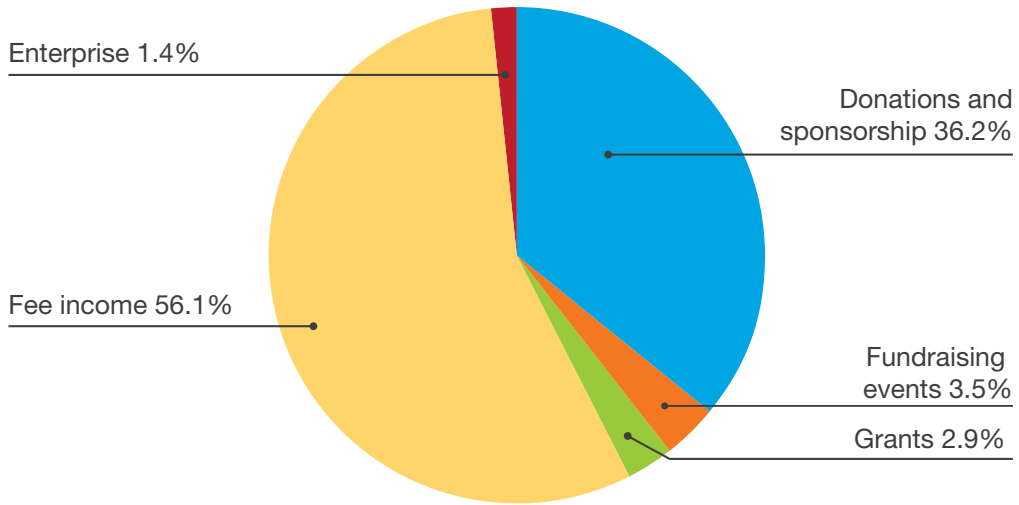
Detailed information regarding our 2022 financials can be found in the Mission Educate 2022 Audit Report.

Income and Expenditure by Project For The Year Ended 31 December 2022

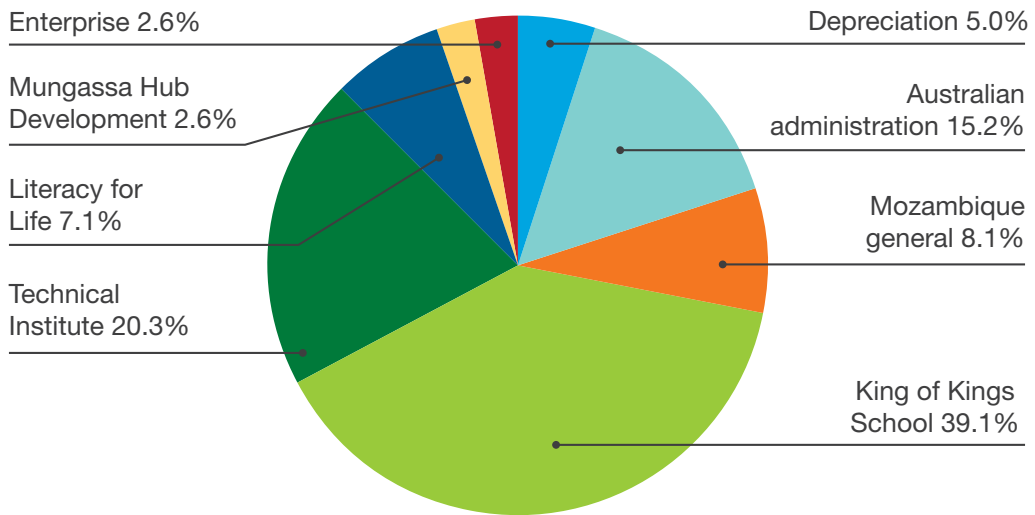
	2022	2021
Revenue	\$	\$
Donations & Sponsorship	341,560	340,678
Fundraising Events	33,069	27,135
Grants	27,362	140,804
Fee Income	529,551	467,138
Enterprise	12,946	12,488
Government COVID-19 support		38,400
TOTAL REVENUE	944,488	1,026,643

	\$	\$
Expenditure	\$	\$
Depreciation	51,588	56,924
Australian Administration	157,326	188,054
Mozambique General	83,767	113,170
King of Kings School	403,613	334,845
Technical Institute	209,396	266,053
Literacy for Life	73,530	63,713
Mungassa Hub Development	26,678	23,913
Enterprise	26,899	26,182
Other		19,811
TOTAL EXPENDITURE	1,032,797	1,092,665
Operational surplus for the year	-88,309	-66,023
Total other comprehensive income		
TOTAL COMPREHENSIVE INCOME	-88,309	-66,023

Total 2022 income \$944k



Total 2022 Expenditure \$1.032m



Auditor Declaration

(Extract from Audit Report - Appendix A)



07 5503 1709
info@allenaudit.com.au
Robina HQ, 37/58 Riverwalk Avenue Robina QLD 4226

Independent Audit Report to the members of Mission Educate Limited

Report on Audit of the Financial Report

Qualified opinion

We have audited the financial report of Mission Educate Limited (the Entity), which comprises the statement of financial position as at 31 December 2022, the statement of profit or loss and other comprehensive income, statement of changes in equity and statement of cash flows for the year ended, and notes to the financial statements, including a summary of significant accounting policies, and the Director's declaration.

In our opinion, except for the effects of the matter described in the *Basis for qualified opinion* section of our report, the accompanying financial report presents fairly, in all material respects, the financial position of the Entity as at 31 December 2022, and its financial performance and its cash flows for the year ended in accordance with the accounting policies described in Note 2 of the financial statements, and the *Australian Charities and Not-for-Profits Commission Act 2012*.

Basis for qualified opinion

Receipts from fundraising are a significant source of revenue for Mission Educate Limited. The Entity has determined that it is impractical to establish control over the collection of revenue prior to entry in its financial records. Accordingly, as the evidence available to us regarding revenue was limited, our audit procedures with respect to revenue had to be restricted to the amounts recorded in the financial records. We therefore are unable to express an opinion on whether all revenue obtained by the Entity is complete.

The Entity conducts its activities both in Australia and Mozambique on the basis of cost and benefit we have not conducted a complete audit examination of the activities conducted outside Australia prior to their recording in the accounts. Accordingly, we are not able to confirm the transactions conducted in Mozambique or the value and existence of assets, liabilities and equity held there.

We conducted our audit in accordance with Australian Auditing Standards. Our responsibilities under those standards are further described in the *Auditor's Responsibility for the Audit of the Financial Report* section of our report. We are independent of the Entity in accordance with the ethical requirements of the Accounting Professional and Ethical Standards Board's APES 110 *Code of Ethics for Professional Accountants* (the Code) that are relevant to our audit of the financial report in Australia. We have also fulfilled our other ethical responsibilities in accordance with the Code. We believe that the audit evidence we have obtained is sufficient and appropriate to provide a basis for our opinion.

We believe that the audit evidence we have obtained is sufficient and appropriate to provide a basis for our qualified opinion.

Page

Liability limited by a scheme approved under Professional Standards Legislation



Emphasis of matter - Basis of accounting

Without modifying our opinion, we draw attention to Note 2 on the financial statement, which describes the basis of accounting. The financial report has been prepared to assist Mission Educate Limited to meet the requirements of the *Australian Charities and Not-for-Profits Commission Act 2012*. As a result, the financial report may not be suitable for another purpose.

Responsibilities of Management and those charged with Governance for the Financial Report

Management is responsible for the preparation and fair presentation of the financial report in accordance with the Australian Accounting Standard and *Australian Charities Not-for-profits Commission Act 2012* and for such internal control as management determines is necessary to enable the preparation of the financial report that is free from material misstatement, whether due to fraud or error.

In preparing the financial report, management is responsible for assessing the Entity's ability to continue as a going concern, disclosing as applicable, matters related to going concern and using the going concern basis of accounting unless management either intends to liquidate the Entity or to cease operations, or has no realistic alternatives but to do so.

Those charged with governance are responsible for overseeing the Entity's financial reporting process.

Auditor's Responsibility for the Audit of the Financial Report

Our objectives are to obtain reasonable assurance about whether the financial report as a whole is free from material misstatement, whether due to fraud or error, and to issue an auditor's report that includes our opinion. Reasonable assurance is a high level of assurance, but not a guarantee that an audit conducted in accordance with the Australian Auditing Standards will always detect a material misstatement when it exists. Misstatements can arise from fraud or error and are considered material if, individually or in the aggregate, they could reasonably be expected to influence the economic decisions of users taken on the basis of this financial report.

[A further description of our responsibilities for the audit of the financial report is located at the Auditing and Assurance Standards Board website at <http://www.auasb.gov.au/Home.aspx>.]

This description forms part of our auditor's report.



Richard Allen CA
12 July 2023



Allen Audit & Advisory

Allen Audit & Advisory

Page 22

Liability limited by a scheme approved under Professional Standards Legislation



Looking Ahead

There is a video clip circulating on social media of a Middle Eastern shepherd, leading a flock of 50 sheep across a crowded highway. He calls to the sheep, and the sheep follow him, ignoring the distractions caused by the traffic. We have been able to navigate the incredible challenges of the past three years by listening to the voice of Jesus, our Good Shepherd. We are so appreciative of all those who have encouraged and supported us through these challenging times.

The significant development of our Mozambican leadership team has provided a stable footing for our future growth. Their sacrifice and commitment as they followed the Good Shepherd, has enabled us to continue with each of our Mozambican projects. We look forward to further development with confidence because of their leadership. The Mission Educate Board is committed to empowering our Mozambican leadership and their teams to achieve our shared vision and strategic goals.

During 2022, the Mission Educate Board decided to suspend the overall Strategic Plan 2021 - 2025 and for the short term, concentrate on achieving individual strategic goals given the specific challenges we face each year. As we look ahead, three goals were identified:

An improvement to the quality of education and facilities at the King of Kings School.

The development of the Mungassa property for the Mission Educate Technical Institute.

A guided expansion of the Literacy for Life Project, incorporating the development of the Literacy Leadership Team.

Our greatest asset is our people and the communities in which they dwell. We continue to seek opportunities to provide activities that will assist in the transformation of individual lives and impact communities. This transformation will be facilitated in the development of vocational skills training in both the Technical Institute and Literacy for Life Project.

We remain committed to the development of our core programs:

- General Education
- Technical Education
- Community Education
- Employment, and
- Partnerships

The need for education in Mozambique has not diminished. Indeed, as a consequence of COVID and the impact of severe weather events, there is a greater need for literacy development, vocational training and general education.

We are especially grateful for the continued support of Bible Society Australia for the development of the Literacy for Life Project and the expansion of the vocational skills training program.

As we look ahead, our greatest challenge continues to be the provision of funds for our operations and projects.

Our greatest confidence remains in Jesus, our Good Shepherd, for His provision, guidance and protection.

Our Registrations

Mission Educate Ltd is:

- Registered with the Australian Securities and Investments Commission
- A registered charity with Australian Charities and Not - for - profits Commission
- Endorsed as a Deductible Gift Recipient by the Australian Tax Office for the operation of the Mission Educate Overseas Aid Fund
- Registered as a Non Government Organisation in Mozambique as Missão Educar
- Registered with the Office of Fair Trading Queensland



Australian Government
Department of Foreign Affairs and Trade



Queensland Government

Thank You to All Our Supporters

We appreciate the contribution and encouragement of all our supporters. We are especially grateful for the support of our major funding partners. Without it, we could not deliver life changing education and training to the people of Mozambique.



We value the regular support given by:

- Emmanuel College – Carrara
- Faith Lutheran College – Redlands
- Freshwater Christian College – Cairns
- Freshwater Christian Church Cairns
- Genesis Church – Carrara
- Kings Christian College – Reedy Creek



Thank you



Connect With Us



missioneducate.org



[/MissionEducate](https://www.facebook.com/MissionEducate)



[/mission_educate](https://www.instagram.com/mission_educate)



[/MissionEducate](https://www.youtube.com/MissionEducate)



[/company/mission-educate](https://www.linkedin.com/company/mission-educate)



+61 7 5534 8050



info@missioneducate.org



PO Box 1039, Mudgeeraba Qld 4213



Citylink Resource Centre
148 Eastlake Street, Carrara Qld 4211

ABN 4233 964 7874



Stand With Us

- Become a regular giver
- Enter into a corporate partnership
- Volunteer with us
- Donate now
- Fundraise for us
- Engage your Church or School

Audit Report - Appendix A

Mission Educate Limited

Annual Report

For the year ended 31 December 2022

<u>Contents</u>	<u>Pages</u>
Directors' Report	2 - 5
Auditor's Independence Declaration	6
Financial Statements comprising;	
Statement of comprehensive income	7
Statement of financial position	8
Statement of changes in equity	9
Cash flow statement	10
Notes to the financial statements	11 - 19
Directors' Declaration	20
Independent audit report to members	21

Mission Educate Limited

A.B.N. 42 339 647 874

Directors Report

Your directors present this report on the company for the financial year ended 31 December 2022.

Directors

The names of each person who has been a director during the year and to the date of this report are:

John Spence	Clarah Chiwaya
Terry King	Tamar Bostock (Resigned 19/02/2022)
Rodney Newth	David Bewley (Appointed August 2022)
Simon Brown	Mathew Walters (Appointed Nov 2022)
Chrisopher Emert	Kayla Zipf (Appointed March 2023)

Directors have been in office since the start of the financial year to the date of this report unless otherwise stated.

Information on Directors

Simon Brown

- Qualifications - Pastor, Chair
- Experience - Pastor Simon Brown has over 25 years leadership experience in Church and Youth Groups. He owns and operates his own electrical business on the Gold Coast and is in great demand as an ethical and highly competent tradesman. Simon brings his business acumen and a commitment to family values to the Board.
- Special Responsibilities - Chair

John Spence

- Qualifications - M.A., Grad Cert Ed.
- Experience - John Spence has spent his career in secondary and tertiary education working in both government and private sectors. He has held leadership positions in both schools and curriculum development committees and has served on a number of Boards. John has been a committed supporter and volunteer with Mission Educate since 2000 and provided wise leadership as Board Chair from 2013 - 2020.
- Special Responsibilities - Board Member

Terry King

- Qualifications - Ed.D., M.Ed., B.Ed., Dip T.
- Experience - Dr Terry King, Executive Director brings a depth of educational experience and expertise to Mission Educate. He is a widely respected educator and has held leadership positions in schools and educational associations. Dr King has been involved with Mission Educate for over 15 years, initially as a board member and as Executive Director since 2011.
- Special Responsibilities - Executive Director

Mission Educate Limited
A.B.N. 42 339 647 874

Information on Directors (continued)

David Bewley

- Qualifications - B.Sc (Hons), Dip Ed., Grad. Dip. Ed. Admin
- Experience - With a career spanning over 40 years, David Bewley began his professional life as a geologist but soon moved to teaching. Since 1984, he has held executive roles in schools, including those of Assistant Principal and Principal. He joined the Mission Educate board in 2014. David brings a depth of educational expertise and experience to the Board.
- Special Responsibilities - Board Member

Christopher Emert

- Qualifications - B.Bus., Cert IC OHS
- Experience - Christopher Emert has spent two decades establishing businesses in the for profit sector in specialist access, recreation and social enterprise. He was impacted by a visit to Rwanda in 2014 which affirmed the value of education in releasing people from the poverty cycle. Chris brings an entrepreneurial yet compassionate perspective to the Board.
- Special Responsibilities - Board Member

Rodney Newth

- Qualifications - Grad. Cert in Business, B.Ed., Cert in Christian Ministries and Church Management
- Experience - Rodney Newth has been involved with Mission Educate for over a decade through his work as Chaplain and teacher at Emmanuel College, Gold Coast. He is a popular and well-respected educator who previously ran a successful interstate transport company. Rod's business and educational perspective is a valued contribution to the Board.
- Special Responsibilities - Board Member

Tamar Bostock

- Qualifications - BA (Modern Asian Studies), Grad Dip Ed
- Experience - Tamar is a learning and performance professional. She has over 25 years' experience in developing, leading and improving strategies and processes for complex organisations in the education, enterprise, industry, and not for-profit sectors. Tamar is passionate about recognising and accelerating people' strengths and building powerful teams.
- Special Responsibilities - Board Member

Mission Educate Limited
A.B.N. 42 339 647 874

Information on Directors (continued)

Clarah Chiwaya

- Qualifications - B. Comm; Grad Dip Chartered Accounting
- Experience - Clarah has developed a wide range of financial skills and experience. She has worked in Finance in a number of companies and is a member of Chartered Accountants CAANZ. A Zimbabwean by birth, Clarah also brings a unique African perspective to the Board.

Mathew Walters

(Appointed November 2022)

- Qualifications - Qualifications: M.Comm. , B.BusManagement
- Experience - With over 20 years' experience in the finance sector, Mathew Walters brings a depth of financial experience and qualifications to the Mission Educate Board. With his varied and extensive experience as a chartered accountant, mortgage broker and financial advisor, he strengthens the Board's approach to compliance, risk management, sustainability strategic planning and entrepreneurship.
- Special Responsibilities -

Kayla Zipf

- Qualifications - B.ChemEng (Hons)
- Experience - Kayla Zipf is an enthusiastic, young professional who broadens the Board's understanding of the needs and priorities of the various generational demographics. Having grown up in Papua New Guinea and witnessing first hand the impact of poverty on those about her, she is passionate about the provision of education as a universal right for each individual. Kayla also brings an added level of professional experience and training in construction and engineering.
- Special Responsibilities -

Meetings of Directors

The table below details the number of meetings of directors that each director was eligible to attend and the number attended.

	Directors' Meetings	
	Number eligible to attend	Number attended
John Spence	10	10
Terry King	10	10
Rodney Newth	10	9
Simon Brown	10	9
Chrisopher Emert	10	9
Clarah Chiwaya	10	10
Tamar Bostock	1	1
David Bewley	3	3
Mathew Walters	1	1
Kayla Zipf	0	0

Mission Educate Limited
A.B.N. 42 339 647 874

Company Secretary

The following person held the position of company secretary at the end of the financial year: - Natalie Baker

Significant changes in State of Affairs

No significant changes in the company's state of affairs occurred during the year.

Principal activities

The principal activities of the company during the year were: - Charity

No significant changes in the nature of these activities occurred during the year.

Dividends

The company is a not for profit entity whose constitution prohibits the payment of dividends. No dividends have been paid or declared since the start of the year.

Environmental regulation

The company's operations are not regulated by any significant environmental regulation under a law of the Commonwealth or a state or territory.

Operating result

The loss from ordinary activities after providing for income tax amounted to \$88,311 (2021:\$66,023 loss).

Options

The company is a company limited by guarantee. The company does not issue shares or other equity interests. No options over issued shares or interests in the company were granted during or since the end of the financial year and no options were outstanding at the date of this report.

Indemnities

No indemnities have been given or insurance premiums paid, during or since the end of the financial year, for any person who is or has been an officer or auditor of the company.

Court proceedings

No person has applied for leave of Court to bring proceedings on behalf of the Company or intervene in any proceedings to which the company is a party for the purpose of taking responsibility on behalf of the company for all or any part of those proceedings.

The company was not a party to any such proceedings during the year.


Auditor's independence declaration

The auditor's independence declaration has been received for the year ended 31 December 2022 and can be found on page 6 of the Annual Report.

Signed in accordance with a resolution of the Board of Directors:



Chairman Rodney Newth



Executive Director Terry King

Dated 01 07 2023



**AUDITORS INDEPENDENCE DECLARATION UNDER SECTION 60-40
OF THE AUSTRALIAN CHARITIES AND NOT-FOR-PROFITS COMMISSION ACT 2012**

**TO THE DIRECTORS OF
Mission Educate Limited**

I declare that to the best of my knowledge and belief, during the year ended 31 December 2022 there have been:

- i. no contraventions of the auditor independence requirements as set out in section 60-40 of the *Australian Charities and Not-for-profits Commission Act 2012*, in relation to the audit; and
- ii. no contravention of any applicable code of professional conduct in relation to the audit.

Richard Allen, CA
12 July 2023

Allen Audit & Advisory

Allen Audit & Advisory

Mission Educate Limited
A.B.N. 42 339 647 874

Statement of comprehensive income
For the year ended 31 December 2022

	Note	2022 \$	2021 \$
Revenue from ordinary activities			
Interest received	2	8	7
Donation received	2	314,376	337,397
Donations for capital works	2	20,000	3,273
Fundraising	2	39,096	27,135
Grants received	2	27,362	140,804
Primary school fee income	2	120,720	115,717
Secondary school fee income	2	207,955	196,587
Other student income - school	2	61,054	29,235
Technical institute fee income	2	139,909	125,599
Enterprise	2	12,945	12,488
Forex Gain	2	1,063	-
Government COVID support	2	-	38,400
Total revenue from ordinary activities		944,486	1,026,643
Expenses from ordinary activities			
Depreciation	2	51,588	56,924
Audit fees	2	1,900	1,900
Communication expense	2	171	-
Campaign expense	2	-	-
Cyclone restoration	2	-	-
Administration - general	2	88,191	57,240
Administration - school	2	7,690	10,809
Equipment	2	7,494	5,456
Fund raising expenses	2	-	4,181
Intervention costs	2	2,466	20,004
Literacy	2	73,530	63,713
Maintenance and cleaning	2	10,478	11,006
Mungassa	2	26,678	23,913
Other costs	2	1,710	7,245
Resources and development	2	5,190	5,985
Staff costs - administrative	2	325,595	364,068
Staff costs - school	2	261,297	242,504
Student expenses	2	76,264	29,322
School materials	2	22,125	13,816
Teaching costs	2	30,388	95,837
Transport and travel	2	8,795	39
Utilities/maintenance - school	2	26,075	27,348
Blockmaking Costs	2	5,174	31,545
Transfer for capital reserve	2	-	-
Forex Loss	2	-	19,811
Total expenses from ordinary activities		1,032,797	1,092,665
Profit/(loss) before income tax		(88,311)	(66,023)
Income tax expense		-	-
Profit/(loss) for the year		(88,311)	(66,023)
Other comprehensive income for the year, net of tax		-	-
Total comprehensive income for the year, net of tax		(88,311)	(66,023)

The accompanying notes form part of this financial report.

Mission Educate Limited
A.B.N. 42 339 647 874

Statement of financial position
As at 31 December 2022

	Note	2022 \$	2021 \$
Current assets			
Cash and cash equivalents	3	85,912	161,254
Trade and other receivables	4	-	-
Total current assets		<u>85,912</u>	<u>161,254</u>
Non-current assets			
Property, plant and equipment	5	<u>1,279,167</u>	<u>1,284,364</u>
Total non-current assets		<u>1,279,167</u>	<u>1,284,364</u>
Total assets		<u>1,365,080</u>	<u>1,445,618</u>
Current liabilities			
Trade and other payables	6	<u>43,505</u>	<u>35,732</u>
Total current liabilities		<u>43,505</u>	<u>35,732</u>
Total non-current liabilities		<u>-</u>	<u>-</u>
Total liabilities		<u>43,505</u>	<u>35,732</u>
Net assets		<u>1,321,576</u>	<u>1,409,887</u>
Equity			
Reserves		1,228,099	1,228,099
Retained earnings		<u>93,477</u>	<u>181,788</u>
Total equity		<u>1,321,576</u>	<u>1,409,887</u>

The accompanying notes form part of this financial report.

Mission Educate Limited
A.B.N. 42 339 647 874

Statement of changes in equity
For the year ended 31 December 2022

	Note	Capital reserve \$	Retained earnings \$	Total equity \$
Balance as at 1 January 2021		1,228,099	247,811	1,475,910
Profit for the year		-	(66,023)	(66,023)
Total other comprehensive income		-	-	-
Balance as at 31 December 2021		1,228,099	181,788	1,409,887
Loss for the year		-	(88,311)	(88,311)
Total other comprehensive income		-	-	-
Balance as at 31 December 2022		<u>1,228,099</u>	<u>93,477</u>	<u>1,321,576</u>

The accompanying notes form part of this financial report.

Mission Educate Limited
A.B.N. 42 339 647 874

Cash flow statement
For the year ended 31 December 2022

	Note	2022 \$	2021 \$
Cash flow from operating activities			
Receipts from ordinary activities		944,486	1,077,967
Payments to suppliers and expenses ordinary		<u>(973,437)</u>	<u>(1,099,864)</u>
Net cash inflow/(outflow) from operating activities	8	<u>(28,951)</u>	<u>(21,897)</u>
Cash flows from investing activities			
Fixed asset purchases		<u>(46,392)</u>	<u>(66,412)</u>
Net cash inflow/(outflow) from investing activities		<u>(46,392)</u>	<u>(66,412)</u>
Cash flows from financing activities			
Proceeds/(repayment) of borrowings		<u>-</u>	<u>-</u>
Net cash inflow/(outflow) from financing activities		<u>-</u>	<u>-</u>
Net increase/(decrease) in cash held			
Cash at beginning of year		<u>161,254</u>	<u>249,561</u>
Cash at the end of the financial year	8	<u>85,912</u>	<u>161,254</u>

The accompanying notes form part of this financial report.

Notes to the financial statements

For the year ended 31 December 2022

The financial statements are for Mission Educate Limited as an individual entity. Mission Educate Limited is a public company, limited by guarantee, incorporated and domiciled in Australia under the Associations Incorporation Act 1981.

Note 1 Statement of significant accounting policies

Basis of Preparation

The directors have prepared the financial statements on the basis that the company is a non-reporting entity because there are no users who are dependent on its general purpose reports. These financial statements are therefore a special purpose financial report that has been prepared in order to meet the requirements of the *Australian Charities and Not-for-profits Commission Act 2012*.

The financial statements have been prepared on an accruals basis, based on historical costs, presented in Australian dollars and all values are rounded to the nearest dollars.

Accounting Policies

Revenue

Grant revenue is recognised in the statement of comprehensive income on receipt. If conditions are attached to the grant which at balance date have not been satisfied, the company recognises the unsatisfied obligation as an expense and as a liability.

Donations and bequests are recognised as revenue when received.

Interest and dividend income are recognised on receipt.

Revenue from the sale of goods is recognised upon the delivery of goods to customers.

Revenue from the rendering of a service is recognised upon delivery of the service to the customers.

All revenue is stated net of the amount of goods and services tax (GST).

Property, Plant and Equipment

Each class of property, plant and equipment is carried at cost or fair value less, where applicable, any accumulated depreciation and impairment losses.

Property plant and equipment that has been contributed at no cost or for nominal cost are valued and recognised at the fair value of the asset at the date it is acquired.

Property

Freehold land and buildings are shown at their cost less subsequent depreciation for buildings.

Plant and Equipment

Plant and equipment are measured on the cost basis less depreciation and impairment losses.

The carrying amount of plant and equipment is reviewed annually by the directors to ensure it is not in excess of the recoverable amount from those assets. The recoverable amount is assessed on the basis of the expected net cash flows which will be received from the assets employment and subsequent disposal. The expected net cash flows have not been discounted to present values in determining recoverable amounts.

The cost of fixed assets constructed within the company includes cost of materials, direct labour, borrowing costs and an appropriate proportion of fixed and variable overheads.

Subsequent costs are included in the asset's carrying amount or recognised as separate asset, as appropriate, only when it is probable that future economic benefits associated with the item will flow to the company and the cost of the item can be measured reliably. All other repairs and maintenance are charged to the income statement during the period in which they are incurred.

Notes to the financial statements

For the year ended 31 December 2022

Note 1 Statement of significant accounting policies (continued)

Depreciation

The depreciable amount of all fixed assets including building and capitalised leased assets, but excluding freehold land, are depreciated over their useful lives commencing from the time the asset is held ready for use. Leasehold improvements are depreciated over the shorter of either the unexpired period of the lease or the estimated useful lives of the improvements.

The depreciation rates used for each class of depreciable asset are:

Class of Fixed Asset	Depreciation Rate (%)	Depreciation Method
Buildings	0 to 7	Prime Cost
Plant and Equipment	10 to 67	Diminishing Value
Furniture	22.5	Diminishing Value
Motor Vehicles	25.0	Diminishing Value

The assets' residual values and useful lives are reviewed and adjusted, if appropriate, at each balance date.

An asset's carrying amount is written down immediately to its recoverable amount if the asset's carrying amount is greater than its estimated recoverable amount.

Gains and losses on disposal are determined by comparing proceeds with the carrying amount. These gains and losses are included in the statement of comprehensive income. When revalued assets are sold, amounts included in the revaluation reserve relating to that asset are transferred to retained earnings.

Leases

Leases of fixed assets, where substantially all the risks and benefits incidental to the ownership of the asset, but not the legal ownership, are transferred to the company, are classified as finance leases.

Finance leases are capitalised by recording an asset and a liability at the lower of the amount equal to the fair value of the leased property or the present value of the minimum lease payments, including any guaranteed residual values. Lease payments are allocated between the reduction of the lease liability and the lease interest expense for the period.

Leased assets are depreciated on a straight-line basis over their estimated useful lives where it is likely that the company will obtain ownership of the asset.

Lease payments under operating leases, where substantially all the risks and benefits remain with the lessor, are charged as expenses in the periods in which they are incurred.

Employee Benefits

Provision is made for the company's liability for employee benefits arising from services rendered by employees to the end of the reporting period. Employee benefits that are expected to be settled within one year have been measured at the amounts expected to be paid when the liability is settled. Employee benefits payable later than one year have been measured at the present value of the estimated future cash outflows to be made for those benefits.

Contributions are made by the company to employee superannuation funds and are charged as expenses when incurred.

Cash and cash equivalents

Cash and cash equivalents include cash on hand, deposits held at-call with banks, other short-term highly liquid investments with original maturities or three months or less, and bank overdrafts. Bank overdrafts are shown within short-term borrowings in current liabilities on the balance sheet.

Notes to the financial statements

For the year ended 31 December 2022

Note 1 Statement of significant accounting policies (continued)

Trade and other payables

These amounts represent liabilities for lease and other related income provided to the entity prior to the end of the financial year which are unpaid. Trade and other payables are presented as current liabilities unless payment is not due within 12 months from the reporting date.

Trade receivables

Trade receivables are initially recognised at fair value and subsequently measured at amortised cost using the effective interest method, less any allowance for expected credit losses. Trade receivables are generally due for settlement within 30 days.

Goods and Services Tax (GST)

Revenues, expenses and assets are recognised net of the amount of GST, except where the amount of GST incurred is not recoverable from the Australian Taxation Office. In these circumstances the GST is recognised as part of the cost of acquisition of the asset or as part of an item of the expense. Receivables and payables in the balance sheet are shown inclusive of GST.

Income Tax

No provision for income tax has been raised as the company is exempt from income tax under Div 50 of the *Income Tax Assessment Act 1997*.

Provisions

Provisions are recognised when the company has a legal or constructive obligation, as a result of past events, for which it is probable that an outflow of economic benefits will result and that outflow can be reliably measured. Provisions recognised represent the best estimate of the amounts required to settle the obligation at the end of the reporting period.

Comparative Figures

When required by Accounting Standards, comparative figures have been adjusted to conform to changes in presentation for the current year.

Adoption of New and Revised Accounting Standards

During the current year, the company adopted all of the new and revised Australian Accounting Standards and Interpretations applicable to its operations which became mandatory.

Notes to the financial statements
For the year ended 31 December 2022

	2022	2021
	\$	\$
Note 2 Details consolidate financial reporting		
<u>MEAA - Australia</u>		
<u>Australian income</u>		
Donations received	184,562	256,975
Donations for capital works	20,000	3,273
Interest received	8	7
Fundraising	37,950	27,135
Campaign income	52,584	-
Total Australian income	<u>295,103</u>	<u>287,390</u>
<u>Australian Government COVID Support</u>		
Australian Gov - COVID support	-	38,400
Total Australian Government COVID support	<u>-</u>	<u>38,400</u>
<u>MEAA expenses</u>		
Audit fees	1,900	1,900
Administration - general	13,611	16,071
Fundraising expenses	-	4,181
Resources and development	5,190	5,985
Staff costs - administration	134,000	159,918
Transport and travel	8,652	-
Total MEAA expenses	<u>163,353</u>	<u>188,054</u>
Profit/(loss) MEEA - Australia	<u>131,750</u>	<u>137,735</u>
<u>MEMA - Mozambican admin</u>		
<u>MEMA income</u>		
Grants received	27,362	140,804
Donations	7,176	-
Total MEMA income	<u>34,538</u>	<u>140,804</u>
<u>MEMA expenses</u>		
Administration - general	21,619	11,228
Blockmaking	5,174	31,545
Staff costs - administration	56,975	70,397
Transport and travel	-	-
Total MEMA expenses	<u>83,767</u>	<u>113,170</u>
<u>MUNGASSA expenses</u>		
Mungassa	26,678	23,913
TOTAL MUNGASSA expenses	<u>26,678</u>	<u>23,913</u>
Profit/(loss) MEMA - Mozambican admin	<u>(75,907)</u>	<u>3,721</u>

Mission Educate Limited
A.B.N. 42 339 647 874

Notes to the financial statements
For the year ended 31 December 2022

	2022	2021
	\$	\$
Note 2 Details consolidate financial reporting (continued)		
<u>Literacy</u>		
<u>Literacy income</u>		
Donations received	71,200	80,422
Total Literacy income	<u>71,200</u>	<u>80,422</u>
<u>Literacy expenses</u>		
Literacy	73,530	63,713
Total Literacy expenses	<u>73,530</u>	<u>63,713</u>
Profit/(loss) Literacy	<u>(2,330)</u>	<u>16,709</u>
<u>Business enterprise</u>		
<u>MEMA enterprise income</u>		
Enterprise	12,945	12,488
Total MEMA enterprise income	<u>12,945</u>	<u>12,488</u>
<u>MEMA expenses - sewing</u>		
Administration - general	2,977	2,064
Equipment	7,494	5,456
Other costs	1,710	1,664
Staff costs - administration	14,574	16,959
Transport and travel	143	39
Total MEMA expenses - sewing	<u>26,899</u>	<u>26,182</u>
Profit/(loss) Business enterprise	<u>(13,953)</u>	<u>(13,694)</u>
<u>METI - Technical institute</u>		
<u>METI income</u>		
Grants received	-	-
Technical institute fee income	145,935	125,599
Total METI income	<u>145,935</u>	<u>125,599</u>
<u>METI expenses</u>		
Administration - general	41,558	23,484
Communication expense	171	-
Cyclone restoration	-	-
Intervention costs	2,466	20,004
Maintenance and cleaning	2,363	1,905
Other costs	6,378	8,028
Staff costs - administration	120,045	116,794
Teaching costs	36,415	95,837
Total METI expenses	<u>209,396</u>	<u>266,052</u>
Profit/(loss) METI - Technical institute	<u>(63,461)</u>	<u>(140,453)</u>

Mission Educate Limited
A.B.N. 42 339 647 874

Notes to the financial statements
For the year ended 31 December 2022

	2022	2021
	\$	\$
Note 2 Details consolidate financial reporting (continued)		
<u>RDR - King of kings school</u>		
<u>RDR income</u>		
Donations received		-
Other student income - school	61,054	29,235
Primary school fee income	120,720	115,717
Secondary school fee income	207,955	196,587
Total RDR income	<u>389,729</u>	<u>341,539</u>
<u>RDR expenses</u>		
Administration - general	2,048	1,946
Administration - school	7,690	10,809
Equipment	1,024	-
Maintenance and cleaning	8,115	9,100
School materials	21,101	13,816
Staff costs - school	261,297	242,504
Student expenses	76,264	29,322
Utilities/Maintenance - school	26,075	27,348
Total RDR expenses	<u>403,613</u>	<u>334,846</u>
Profit/(loss) RDR - King of kings school	<u>(13,885)</u>	<u>6,694</u>
Depreciation	51,588	56,924
Transfer for capital reserve	-	-
Forex gain/loss	(1,063)	19,811
Profit/(loss) for the year	<u>(88,311)</u>	<u>(66,023)</u>

Notes to the financial statements
For the year ended 31 December 2022

	2022	2021
	\$	\$
Note 3 Cash and cash equivalents		
<u>Funds held in Australia:</u>		
Total Funds held in Australia	22,830	92,793
<u>Funds held in Mozambique:</u>		
MEMA	9,978	9,522
METI	4,018	646
RDR	49,087	58,292
Total Funds held in Mozambique	63,082	68,461
Total cash and cash equivalents	85,912	161,254
Note 4 Trade and other receivables		
<u>Trade and other receivables in Australia:</u>		
GST asset	-	-
Total Trade and other receivables in Australia	-	-
<u>Trade and other receivables in Mozambique:</u>		
Current		
Prepayments:		
RDR	-	-
Total Trade and other receivables in Mozambique	-	-
Total trade and other receivables	-	-
Note 5 Property, Plant and Equipment		
<u>Fixed assets in Australia</u>		
Plant and equipment - Australia	8,830	8,830
Less accumulated depreciation	(8,830)	(8,830)
Total plant and equipment	-	-
Total fixed assets in Australia	-	-
<u>Fixed assets in Mozambique</u>		
Manga school		
Land and buildings - Mozambique	1,110,982	1,110,982
Less accumulated depreciation	(124,698)	(109,232)
Total land and buildings	986,284	1,001,750
Plant and equipment - Mozambique	47,851	35,515
Less accumulated depreciation	(34,910)	(31,855)
Total plant and equipment	12,941	3,660
Motor vehicles - Mozambique	39,358	39,358
Less accumulated depreciation	(30,052)	(26,950)
Total motor vehicles	9,306	12,408

Notes to the financial statements
For the year ended 31 December 2022

	2022	2021
	\$	\$
Note 5 Property, Plant and Equipment (continued)		
Moz		
Plant and equipment - Mozambique	13,759	13,759
Less accumulated depreciation	<u>(9,496)</u>	<u>(8,075)</u>
Total plant and equipment	<u>4,263</u>	<u>5,684</u>
METI		
Land and buildings - Mozambique	217,587	183,531
Less accumulated depreciation	<u>(15,382)</u>	<u>(8,229)</u>
Total land and buildings	<u>202,205</u>	<u>175,302</u>
Plant and equipment - Mozambique	215,100	215,100
Less accumulated depreciation	<u>(157,958)</u>	<u>(138,911)</u>
Total plant and equipment	<u>57,142</u>	<u>76,189</u>
Furniture and fittings - Mozambique	23,623	23,623
Less accumulated depreciation	<u>(17,501)</u>	<u>(15,461)</u>
Total furniture and fittings	<u>6,121</u>	<u>8,162</u>
Literacy		
Plant and equipment - Mozambique	2,699	2,699
Less accumulated depreciation	<u>(1,951)</u>	<u>(1,702)</u>
Total plant and equipment	<u>746</u>	<u>996</u>
Furniture and fittings - Mozambique	577	577
Less accumulated depreciation	<u>(417)</u>	<u>(364)</u>
Total furniture and fittings	<u>160</u>	<u>213</u>
Total fixed assets in Mozambique	<u>1,279,167</u>	<u>1,284,364</u>
Total Property, Plant and Equipment	<u>1,279,167</u>	<u>1,284,364</u>

Note 6 Trade and other payables

Trade and other payables in Australia:

Current

Unsecured liabilities		
PAYG payable	-	-
Superannuation payable	2,077	3,313
GST liabilities	1,236	552
Leave accrued	32,729	24,404
Grant accrual	<u>7,463</u>	<u>7,463</u>
Total trade and other payables	<u>43,505</u>	<u>35,732</u>

Notes to the financial statements
For the year ended 31 December 2022

	2022	2021
	\$	\$

Note 7 Members' Guarantee

The company is limited by guarantee. If the company is wound up, the Constitution states that each member is required to contribute a maximum of \$20 towards meeting any outstanding obligations of the company. At 31 December 2022 the number of members was 8 (2021: 8).

Note 8 Cash flow information

Reconciliation of cash

Cash at the end of the financial year as shown in the cash flow statement is reconciled to the related items in the balance sheet as follows:

Cash and cash equivalents	85,912	161,254
Cash at the end of the year	85,912	161,254

Reconciliation of cash flows from operations with profit after income tax

Profit after income tax	(88,311)	(66,023)
<i>Non-cash flows in profit</i>		
Depreciation	51,588	56,924
Transfer to capital reserve	-	-
<i>Changes in assets and liabilities</i>		
(Increase)/decrease in trade and other receivables	-	51,325
(Decrease)/increase in trade and other payables	7,773	(64,122)
Cash flows from operations	(28,951)	(21,895)

Note 9 Company Details

The registered office and principal place of business of the company is:

Mission Educate Limited
Citylink Resource Centre
148 Eastlake Street
Carrara Qld 4211

Note 10 Events after the end of the reporting period

No events have occurred since the end of the reporting period which will have a material financial effect.

The financial report was issued on 12 July 2023 by the board of directors.

Directors' Declaration

The directors have determined that the company is not a reporting entity and that this special purpose financial report should be prepared in accordance with the accounting policies described in Note 1 to the financial statements.

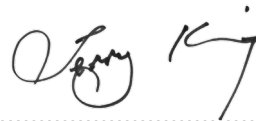
The directors of the company declare that:

- 1 The financial statements and notes as set out on pages 5 to 22 are in accordance with the Australian Charities and Not-for-profits Commission Act 2012 and:
 - a. comply with the Accounting Standards described in Note 1 To the financial statements; and
 - b. give a true and fair view of the company's financial position as at 31 December 2022 and of its performance for the year ended on that date; and
- 2 There are reasonable grounds to believe that the registered entity will be able to pay its debts as and when they become due and payable.

This declaration is signed in accordance with subs 60.15(2) of the Australian Charities and Not-for-profits Commission Regulation 2013.



.....
Chairman Rodney Newth



.....
Executive Director Terry King

Dated 01/07/2023

Independent Audit Report to the members of Mission Educate Limited

Report on Audit of the Financial Report

Qualified opinion

We have audited the financial report of Mission Educate Limited (the Entity), which comprises the statement of financial position as at 31 December 2022, the statement of profit or loss and other comprehensive income, statement of changes in equity and statement of cash flows for the year ended, and notes to the financial statements, including a summary of significant accounting policies, and the Director's declaration.

In our opinion, except for the effects of the matter described in the *Basis for qualified opinion* section of our report, the accompanying financial report presents fairly, in all material respects, the financial position of the Entity as at 31 December 2022, and its financial performance and its cash flows for the year ended in accordance with the accounting policies described in Note 2 of the financial statements, and the *Australian Charities and Not-for-Profits Commission Act 2012*.

Basis for qualified opinion

Receipts from fundraising are a significant source of revenue for Mission Educate Limited. The Entity has determined that it is impractical to establish control over the collection of revenue prior to entry in its financial records. Accordingly, as the evidence available to us regarding revenue was limited, our audit procedures with respect to revenue had to be restricted to the amounts recorded in the financial records. We therefore are unable to express an opinion on whether all revenue obtained by the Entity is complete.

The Entity conducts its activities both in Australia and Mozambique on the basis of cost and benefit we have not conducted a complete audit examination of the activities conducted outside Australia prior to their recording in the accounts. Accordingly, we are not able to confirm the transactions conducted in Mozambique or the value and existence of assets, liabilities and equity held there.

We conducted our audit in accordance with Australian Auditing Standards. Our responsibilities under those standards are further described in the *Auditor's Responsibility for the Audit of the Financial Report* section of our report. We are independent of the Entity in accordance with the ethical requirements of the Accounting Professional and Ethical Standards Board's APES 110 *Code of Ethics for Professional Accountants* (the Code) that are relevant to our audit of the financial report in Australia. We have also fulfilled our other ethical responsibilities in accordance with the Code. We believe that the audit evidence we have obtained is sufficient and appropriate to provide a basis for our opinion.

We believe that the audit evidence we have obtained is sufficient and appropriate to provide a basis for our qualified opinion.

Emphasis of matter - Basis of accounting

Without modifying our opinion, we draw attention to Note 2 on the financial statement, which describes the basis of accounting. The financial report has been prepared to assist Mission Educate Limited to meet the requirements of the *Australian Charities and Not-for-Profits Commission Act 2012*. As a result, the financial report may not be suitable for another purpose.

Responsibilities of Management and those charged with Governance for the Financial Report

Management is responsible for the preparation and fair presentation of the financial report in accordance with the Australian Accounting Standard and *Australian Charities Not-for-profits Commission Act 2012* and for such internal control as management determines is necessary to enable the preparation of the financial report that is free from material misstatement, whether due to fraud or error.

In preparing the financial report, management is responsible for assessing the Entity's ability to continue as a going concern, disclosing as applicable, matters related to going concern and using the going concern basis of accounting unless management either intends to liquidate the Entity or to cease operations, or has no realistic alternatives but to do so.

Those charged with governance are responsible for overseeing the Entity's financial reporting process.

Auditor's Responsibility for the Audit of the Financial Report

Our objectives are to obtain reasonable assurance about whether the financial report as a whole is free from material misstatement, whether due to fraud or error, and to issue an auditor's report that includes our opinion. Reasonable assurance is a high level of assurance, but not a guarantee that an audit conducted in accordance with the Australian Auditing Standards will always detect a material misstatement when it exists. Misstatements can arise from fraud or error and are considered material if, individually or in the aggregate, they could reasonably be expected to influence the economic decisions of users taken on the basis of this financial report.

[A further description of our responsibilities for the audit of the financial report is located at the Auditing and Assurance Standards Board website at <http://www.auasb.gov.au/Home.aspx>.]

This description forms part of our auditor's report.



Richard Allen CA
12 July 2023

Allen Audit & Advisory

Allen Audit & Advisory



Knowing changes
everything.